

## Mobile Communications



### **Emergency response? Remote mining camp? Construction site? Streaming live video from the racetrack?**

Whatever your mobile needs, the Skycasters self-contained high speed internet communications trailer may be the perfect solution. The system can be fully deployed within minutes of arriving on the scene, even by untrained personnel, so your team can concentrate on doing the job that brought them there in the first place. You can even establish a wireless hot-spot - standard on all our trailers. And deploying an auto-acquire antenna on a trailer, rather than on a vehicle (van, bus, mobile command center), leaves the tow vehicle free to leave the scene and do other work. Painstakingly engineered and refined during a 24 month R&D cycle, this trailer represents our best thinking in terms of quality and value.

The C-Com .98m or 1.2m iNetVu auto-pointing antenna rides between the rear mechanical utility box and the removable front electronics box on an ultra strong boxed aluminum frame with diamond plate decking. A rigid cover is available for additional protection and peace of mind. We also offer a slightly larger trailer to accommodate the 1.8m iNetVu.

#### **Front Electronics Box**

- Weather resistant and lockable
- Easily removable (without tools) for inside storage. Four carrying handles - 3.5" grip (8.9cm)
- Vibration damped 19" (48cm) electronics rack, 13" (33cm) depth, 12U
- 4 port wireless G router
- iDirect 3100 modem
- C-Com iNetVu 7000 controller
- Weather rated GFCI power circuit with surge suppression power strip
- Four bulkhead mounted quick-disconnect couplings for antenna control cables (with weatherproof caps)
- Electronic systems powered by generator or external power source via bulkhead mounted NEMA 5 all weather power receptacle
- Ventilation system - 120 volt, thermostat controlled (-10F to 100F/ -23C to 38C), 131 CFM (3.71 CMM), filtered ventilation with intake and exhaust rain hoods
- Positive-locking hinge for added safety

#### **Rear Utility Box**

- Weather resistant and lockable
- Honda EU1000i gasoline generator (8 hour runtime)
  - 10' (3m) power cord for removal of generator from box during normal operation
  - Integrated ventilation door for in-box operation during inclement weather
- Ventilated gas can storage
- Tool kit, 10' (3m) ground cable & clamp
- Fire extinguisher (2.5lb, multipurpose ABC, rechargeable)
- Positive-locking hinge for added safety



**To learn more about Skycasters and our Mobile Communications Solutions  
visit [skycasters.com](http://skycasters.com) or call (330) 785-2100 toll-free (800) 268-8653**

## Self-Contained Satellite Internet Trailer Specifications (.98m/1.2m Auto-Pointing Antenna)

### Dimensions

- Overall Length – 173" (4.39m)
- Overall Width – 77" (1.96m)
- Overall Height (antenna stowed) – 49" (1.24m)
- Overall Height (with optional cover) – 53" (1.35m)
- Overall Height (with 1.2m antenna deployed) – 97" (2.46m)
- Deck Width – 57" (1.45m)
- Deck Length – 84" (2.13m)
- Deck Height – 30" (0.76m)
- Ground Clearance – 13" (0.33m)
- Utility Boxes – 56.5" w x 16" d x 21" h (1.44m x 0.41m x 0.53m)

### Weight

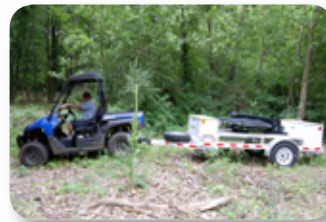
- Total - 954 lbs (433 kg)
- Total (with optional cover) - 1081 lbs (490 kg)
- Tongue Weight - 145 lbs (66kg)

### Chassis

- Corrosion resistant, all aluminum, box frame construction, powder coated Arctic White. Diamond plated top surfaces, polished and clear-coated.
- 2" ball (5cm), lockable, w/safety chains
- 14" steel wheels with 205/75R14 radial tires
- Full size matching spare tire w/lock
- Fully independent suspension - twin 500 lb (227 kg) torsional stub axles
- 4 oversized corner jacks (2000 lb capacity each) (907 kg) for effortless leveling of the trailer
- Integrated 8' (2.44m) ground rod storage
- 4 pin flat connector for trailer lighting
- DOT approved lighting, turn signals and plate light
- DOT approved reflectors and reflective tape on all 4 sides
- Safety placards and warning decals
- C-Com iNetVu auto-pointing antenna (.98m or 1.2m)
- Twin folding 2.4 GHz high performance 8 dBi omnidirectional antennas for 1000' (300m) wireless access. Weather resistant, anodized aluminum with stainless steel hardware. Integrated GPS antenna mount.

### Options

- Rigid 2-piece Turtle Shell antenna cover
  - Lightweight (57 lbs front, 70 lbs rear) (26kg / 32 kg)
  - 8 lifting/carrying handles, 3.5" grip (8.9cm)
  - 10 heavy duty stainless steel latches
  - Weather resistant
- Aluminum rims
- Weatherproof external RJ45 connector
- Rack mount UPS and power conditioning system (10 minute runtime)
- Color options: Arctic White/Polished Diamond Plate, Desert Tan, Olive Drab (Diamond Plate is color matched and matte finish on tan/olive models.)



**To learn more about Skycasters and our Mobile Communications Solutions  
visit [skycasters.com](http://skycasters.com) or call (330) 785-2100 toll-free (800) 268-8653**